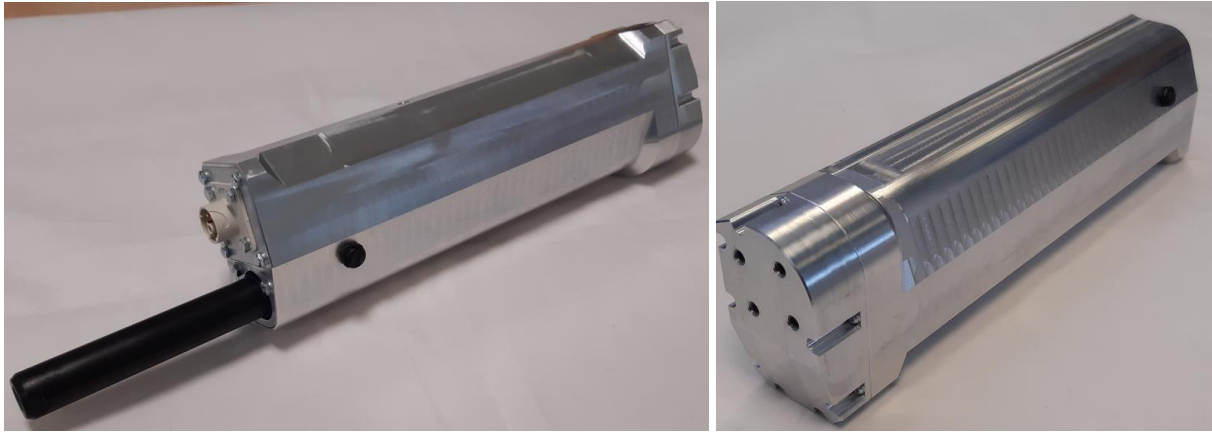


MAJ : 25/08/2023



*Non contractual view*

## 1 - Application

Aeronautic application  
Door opening assistance

## 2 - Description

- Brushed DC motor, 28 V<sub>DC</sub>, 90 Watts
- Planetary gearbox
- Linear potentiometer
- Back driving ball screw (3 mm lead, Ø10 mm)
- Freewheel & 28 V<sub>DC</sub> safety brake (up to 2000 N on the rod / compression only)
- Torque limiter (equivalent to a limit of 1900 N on the rod)
- Ø20 mm rod with M10 internal thread at the end
- Anti-rotation system
- 4x M5 mounting holes on rear face (opposite rod side)
- 8x M3 mounting holes on front face (rod side)
- Aeronautic connector (4 or 7 contacts)
- IP65 sealed design with air intake
- Anti-corrosion paint
- REACH & RoHS compliant

### 3 – Technical data

| CARACTERISTIQUES           | SPECIFICATIONS                |
|----------------------------|-------------------------------|
| Stroke                     | 180 mm                        |
| Max axial load             | 1500 N                        |
| Max radial load            | 15 N                          |
| Unbraked back driving load | 170N                          |
| Nominal force              | 1250 N                        |
| Nominal speed              | 40 mm/s                       |
| Power supply               | 28 V <sub>DC</sub> / 5 A      |
| Endurance                  | 100 000 cycles                |
| MTBF                       | 500 h                         |
| Operating T° (storage T°)  | -40°C à +70°C (-55°C à +85°C) |
| Ingress protection index   | IP65                          |
| Survival load factor       | 6 g                           |
| Size                       | 291 x 81 x 45 mm              |
| Mass                       | 2,1 kg                        |

### 4- Dimensions (mm)

