

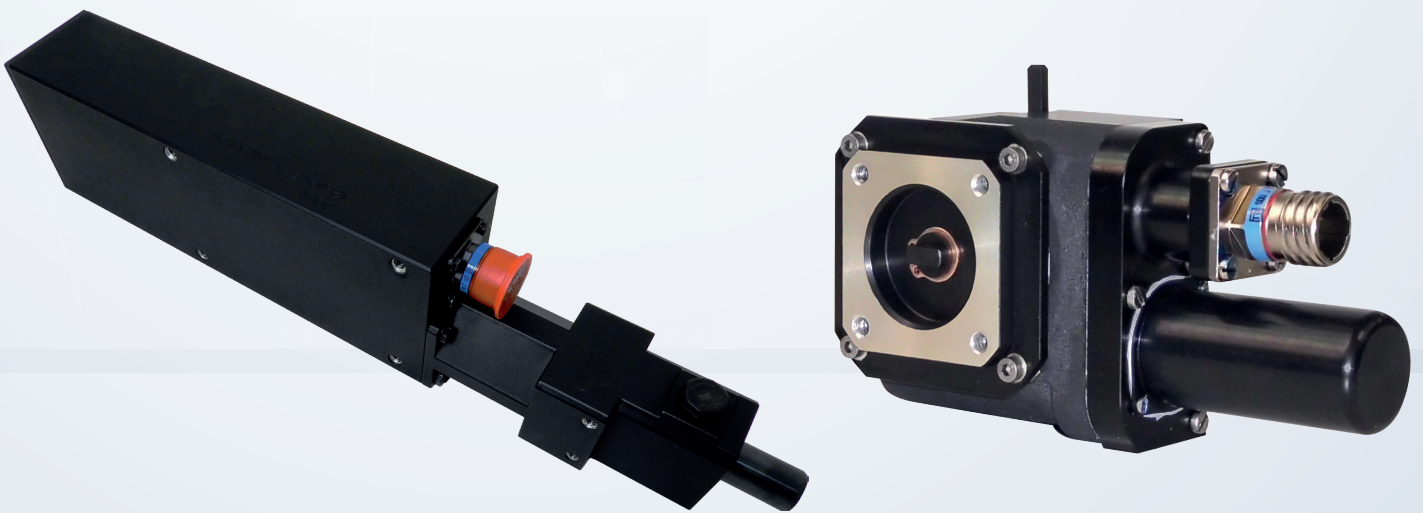


PRECISION ENGINEERING

EN-9100 certified & environmental testing MIL-STD-810

# Electric Embedded Actuators

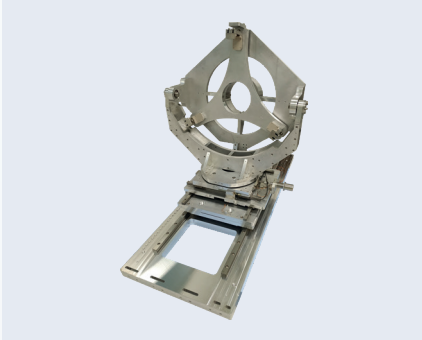
LINEAR & ROTARY ACTUATORS  
DEDICATED MECHANISMS



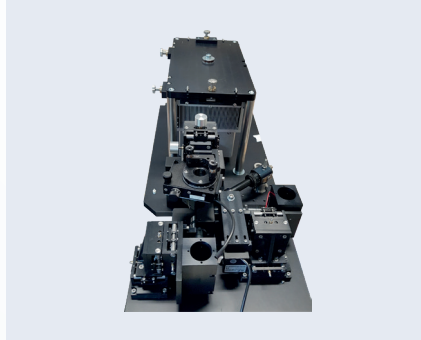
---

AEROSPACE | AUTOMOTIVE | DEFENCE | ELECTRONICS | PHOTONICS  
RAILWAY | LOGISTICS | MEDICAL | NUCLEAR | SCIENCE

# A partner in **precision engineering** for your projects over 20 years: Expertise and creativity!



**MICRO-NANO POSITIONING  
& OPTO-MECHANICS**



**LIFE SCIENCE**



**HIGH PRECISION SPECIAL  
MACHINE & ROBOTIC**

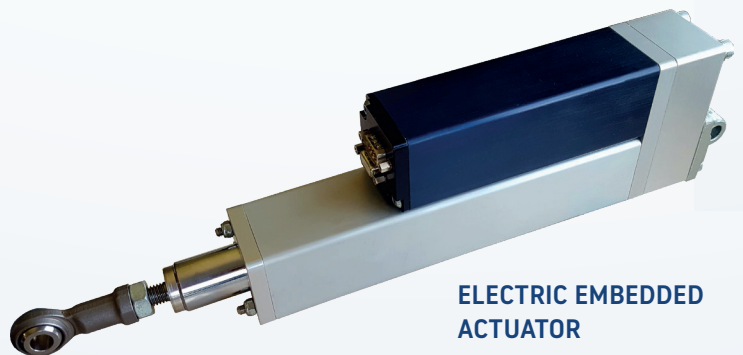
ISP SYSTEM is a comprehensive program in Precision Engineering and is specialized in Design and Manufacturing of High Precision mechanic and mechatronic equipment.

Providing highly innovative and custom solutions is our commitment. Our expertise in precision engineering helps us deliver solutions fitting customer's challenging application needs. Customized products can be offered to fully dedicated turnkey solutions, including design, testing and manufacturing. Our multidisciplinary skilled teams, specialists in their fields, have gained precision engineering knowledge.

ISP SYSTEM delivers annually up to 5 000 embedded actuators to 10 000 micro-positioning devices and opto-mechanism, 50 high precision machines, 2 000 mechatronics modules for medical devices mainly in Europe. ISP SYSTEM has been recently extending its activity all over the world.

ISP SYSTEM provides a spectrum of services including: **R&D, Design, Prototype Manufacturing, Industrialization, Mass production, Commissioning, After Sales ...**

ISP SYSTEM was founded in 1997. ISP Group is a SME of 100 skilled peoples (including its factories), 30 % of them are graduates. ISP SYSTEM is Quality certified ISO 9001, ISO 13485 and EN 9100.



**ELECTRIC EMBEDDED  
ACTUATOR**

ISP SYSTEM is member of competitiveness clusters such as "Aerospace Valley", "Alpha-RLH" and "Photonics France" and "Optitec".

ISP SYSTEM's catalogue includes mechatronic actuators for rotation and translation motions.

Our products are integrated in aerospace, defence, railways or submarine vehicles.

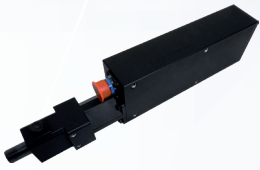
ISP SYSTEM offers optimized solutions including electronic driver thanks to mechatronics skills.

**ISP SYSTEM proposes actuator architecture adapted to the application:**

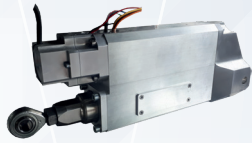
- Screw driven by stepper, DC or Brushless motor
- Direct drive with linear or torque motor
- Electromagnetic coil or voice coil

Actuators can be instrumented with travel and/or force sensors and connected by CAN bus.

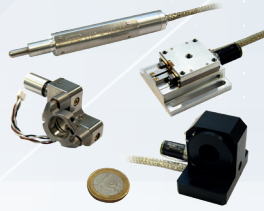
## LINEAR ELECTRIC ACTUATORS



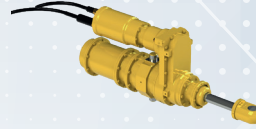
**Automatic gun  
Rearmament**  
DEFENCE



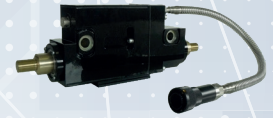
**Servo actuator**  
SPACE



**Micro-actuators**  
PHOTONICS

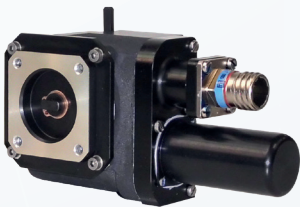


**High force actuator**  
SUBMARINE

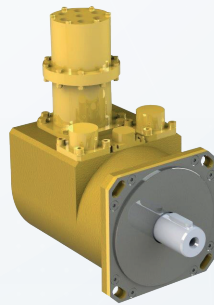


**Safety actuator**  
RAILWAYS

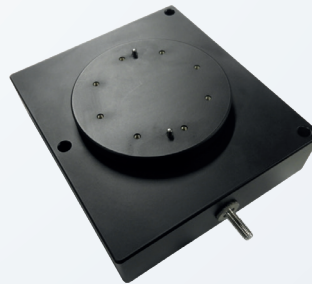
## ROTARY ELECTRIC ACTUATORS



**Valve actuator**  
AERONAUTICS



**Rotary actuator**  
SUBMARINE



**Rotary actuator**  
DEFENCE



**Locking actuator**  
DEFENCE

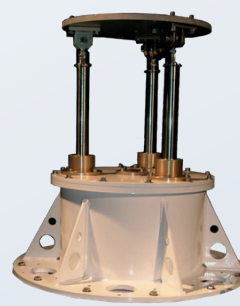
## DEDICATED MECHANISMS



**Deformable mirror**  
SPACE



**Antenna positioner**  
DEFENCE



**Mobile equipment  
actuator**  
DEFENCE



**Motorized armored  
vehicle ramp**  
DEFENCE


Options and customization are available such as reversibility/irreversibility, emergency manual operation, brake, energy management, control software, CAN Connectivity... ISP SYSTEM actuators can be designed or adapted to be compliant with harsh environment such as extreme temperatures, high pressure or



Ultra High Vacuum conditions, nuclear radiations (Gamma, X, neutrons), intense electromagnetic fields, external agents (salt fog, dust) or vibrations and shocks.



## OUR REFERENCES

ABB • AMPLITUDE LASER • AIRBUS • AIRBUS HELICOPTER • ALSTOM TRANSPORT • ARIANE GROUP  
ARQUUS • BARCO NV • B BRAUN MEDICAL • CEGELEC • CEA-DAM • CNIM • CNES • CNRS • DAHER AEROSPACE  
DASSAULT AVIATION • DGA • DSO • ELI • ESA • ESRF • ETIENNE LACROIX • GE MEDICAL SYSTEM  
HZDR • IMV TECHNOLOGIES • IXBLUE • JOHNSON CONTROLS • LECTRA • LIEBHERR AEROSPACE • MBDA  
NAVAL GROUP • NEW TL • NEXANS • NEXTER • ONERA • RATP • RUAG • SAFRAN • SAFT  
SAINT-GOBAIN • SAVOYE • SIEMENS HEALTHCARE • SODERN • SPIE • SYNCHROTRON SOLEIL • THALES  
THALES ALENIA SPACE • TIFLEX • TRIXELL • VALEO



 **ISP SYSTEM**  
Z.I. de la Herray - B.P. 10047  
65501 VIC-EN-BIGORRE — FRANCE

 +33 (0)5 62 33 44 44  
 +33 (0)5 62 33 44 45

 [contact@isp-system.fr](mailto:contact@isp-system.fr)  
 [www.isp-system.fr](http://www.isp-system.fr)

ELECTRIC EMBEDDED ACTUATORS WEBSITE  
[www.electrical-actuator.com](http://www.electrical-actuator.com)