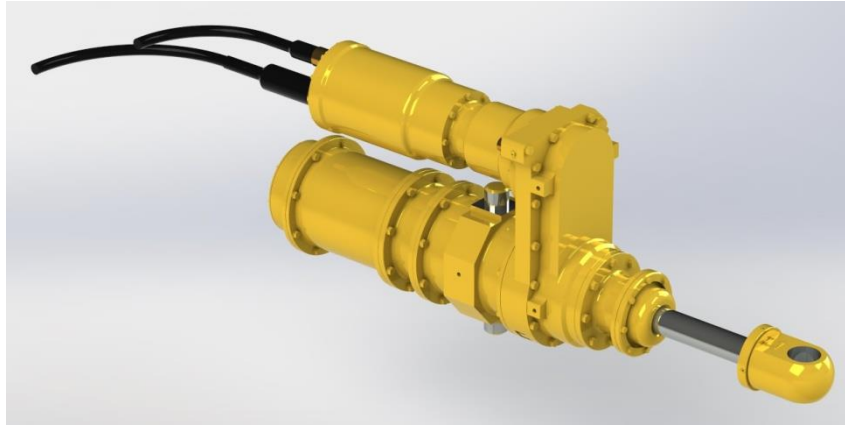


Update : 08/25/2017



Non-contractual photo

Immersed heavy duty linear actuator

1 - Application

This actuator is adapted to application for off-shore platforms, trap-doors on ship, locks on boat.

The market targeted is Naval and Defense.

2 - Description

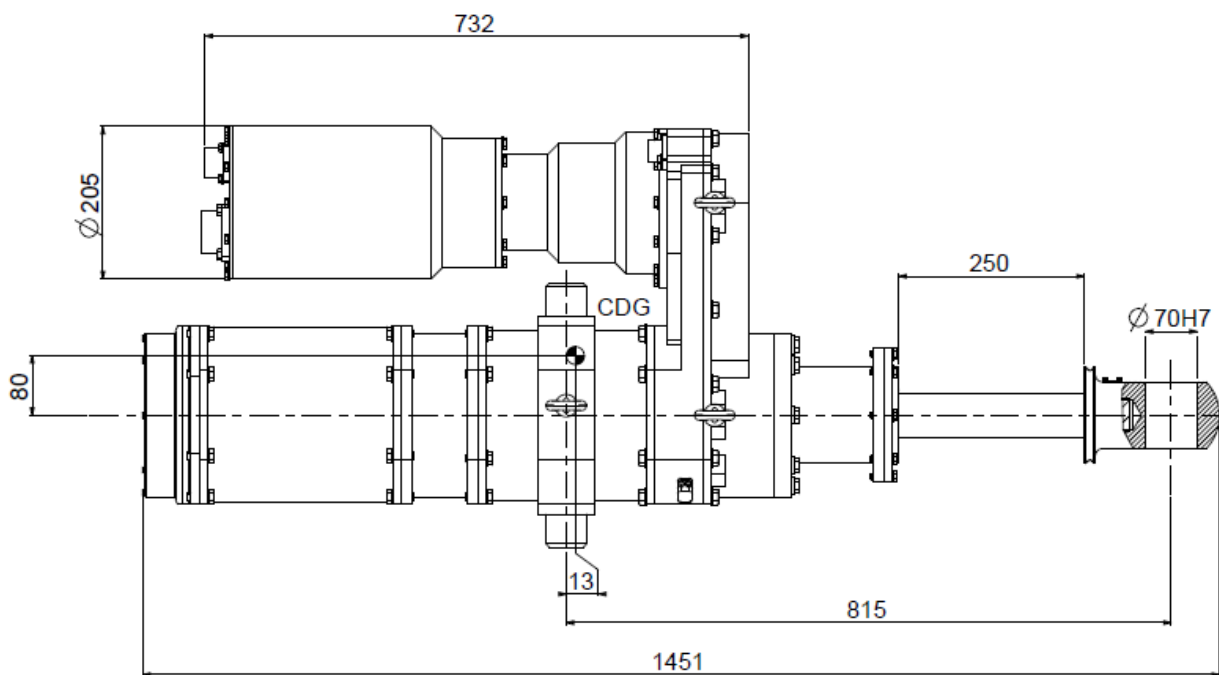
- Frameless DC motor
- Roll screw
- Push-pull actuator
- Electrical connector MIL-D38999
- Protected with paint and coating for harsh environment
- Resist to 50 bar pressure
- Certified to MIL-STD-810

All our products can be customized to match your exact requirements

3 - Technical Data

CHARACTERISTICS	SPECIFICATIONS
Travel:	200 mm
Max velocity:	30 mm/s
Force:	200 kN
Size:	1500 x 600 x 300 mm"
Weight:	350 kg
Material:	Stainless steel with high characteristics
Electrical specification:	BLDC 400V 50Hz Three-Phase
Electronic:	TOR
Immersion protection:	Down to 500m depth, IP69

4 - Dimensions (mm) for 250mm-travel actuator



Note: Other information's or drawings on demand

ISP SYSTEM
 Z.I. de la Herray
 65500 VIC-EN-BIGORRE – France

+33 (0)5 62 33 44 44
 contact@isp-system.fr

www.isp-system.fr

Capital de 1 000 000 € - SIRET : 410 675 078 00027 – APE : 71128 – TVA : FR 19 410 675 078