

**This standard mount is motorized
by two miniaturized actuators**



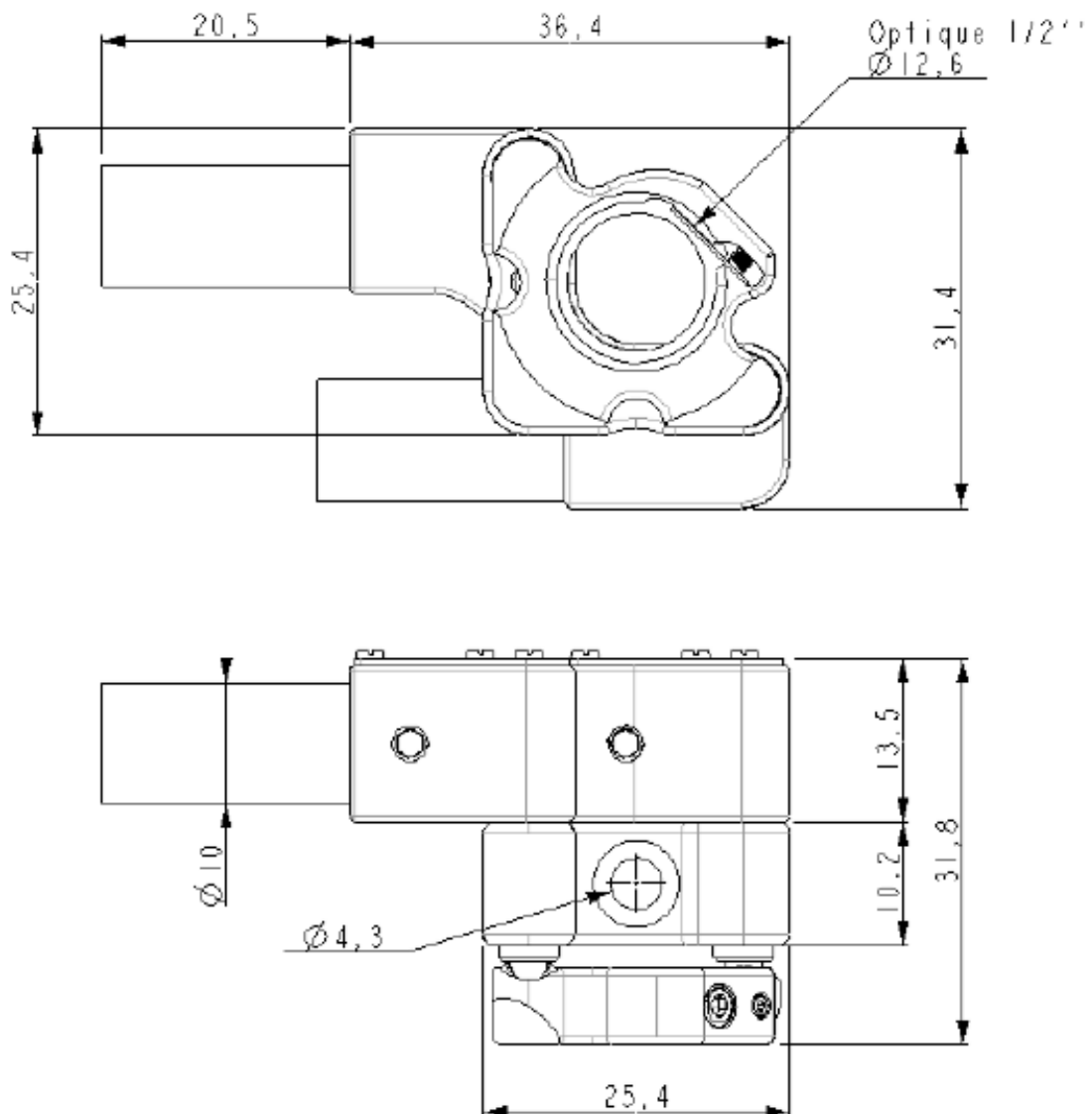
1 - Characteristics

- Minimal size but high quality of guidance
 - Size : mm (out of motorization)
 - Mass and matter : 100g , Stainless steel
 - Fitted to optical mounts ½ ;1";2"
- Performance (mount ½ ")
 - Angular travel : +/- 3 deg
 - Speed : 0.25deg/s
 - Control by stepper motor : Nominal current 200mA
 - Mounting resolution : 4 μrad by steps
 - Stability of the position (out of supply)
 - Repeatability : < 10 μrad on open loop
- Design easily adjustable for customized solution:
 - Package for cleanliness class ISO6, High vacuum...
 - Addition of Positioning sensors or end of travel
 - Modifications of characteristics, fixing, connector...
 - Combination with other type of actuators
 - Possibility to use other type of motorization: DC, Brushless....
- Control: electronic driver for hybrid and two-phase stepper motor (please consult us for the products on connection on box or OEM)

2 - Application

Accurate positioning and orientation of optical, sensors and samples

3 – Dimensions (version 1/2")



Delivered with output 8 wires –Length 200mm

Nota: Technical data of this datasheet may be subject to modifications, depending on product updates