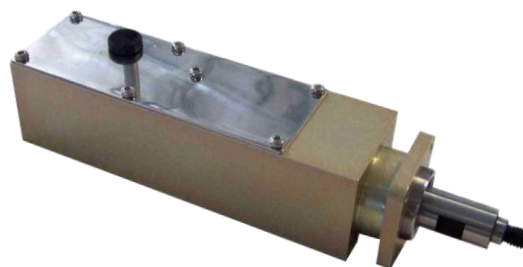


## VMP 30-30-300 ensures high precision movement.

- The VMP 30-30-300 is driven by an hybrid step by step motor.
- It provides an irreversible translation motion through a precision screw.
- The VMP got an anti-rotation rod system ensuring an easy application.
- Its embedded guidance allows to support radial load
- Geometry and characteristic can be adapted upon customer's request.



Non contractual photo

**Applications:** Accurate positioning of optical and sensors

## 1 - Technical specifications

### Motorization:

Hybrid stepper motor, bipolar, 400 step/rev.

Voltage	24V to 48V
Current	0,4 A/phase
Resistance	33 $\Omega$ /phase
Inductance	14 mH/phase

### Technical specification:

Travel	30 mm
Repetability	0,5 $\mu$ m RMS
Resolution	55 $\mu$ m/step motor
Linearity	< 1%
Minimum increment control recommended	3 steps motor

### Positioner:

Standard Delivery with 3m of unshielded multi-conductors wiring ( 8x 0.25mm<sup>2</sup>) and A Sub-D plug 25 points connector

### Stress resistance:

Axial : 300 N

Radial : 30 N

### Embedded Options on LMJ Version:

2 NF limit contacts

Short term unidirectional repeatability for 10 operations:  $\pm$  10 $\mu$ m

### Casse de propreté :

Conditionné pour utilisation en ISO 5

### Mass:

1,5 kg max.

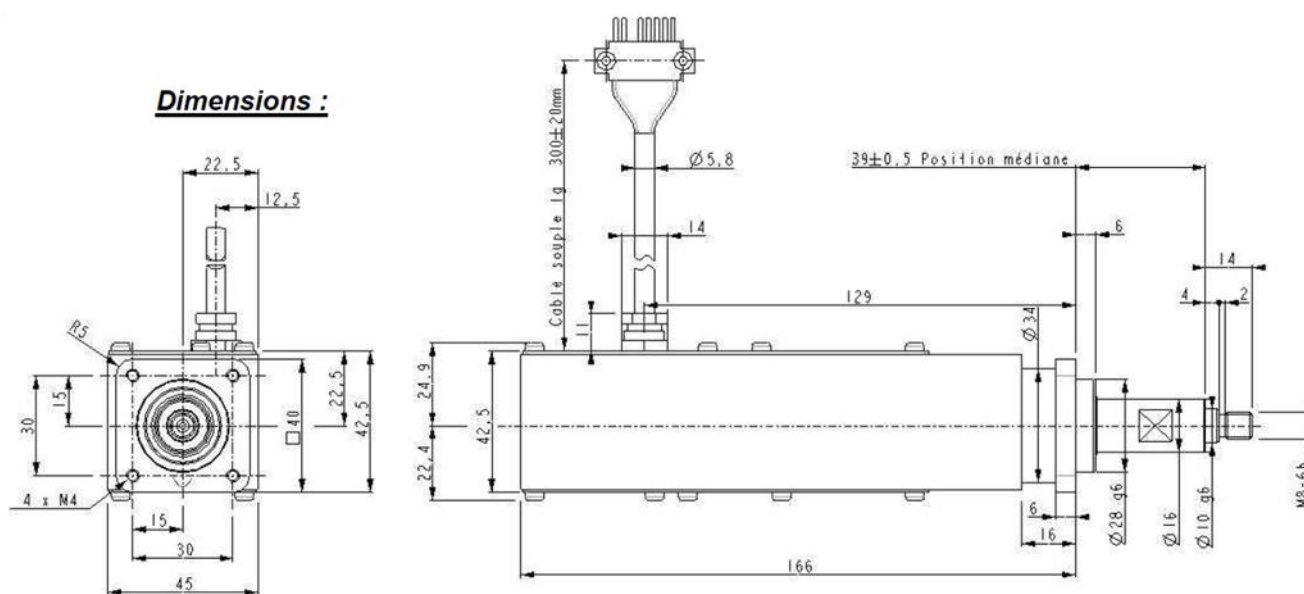
### Operating temperature :

2°C to 22°C

### Operation under high vacuum:

Provided for an high vacuum operation.

## 2 - Dimensions



Actuator wiring		
Index	Function	Contact
1	PHASE A+	MALE
2	PHASE A-	MALE
14	MASS MECA	MALE
3	Phase B+	MALE
4	Phase B-	MALE
17	LIMIT +	MALE
16	COMMON LIMIT	MALE
18	LIMIT-	MALE