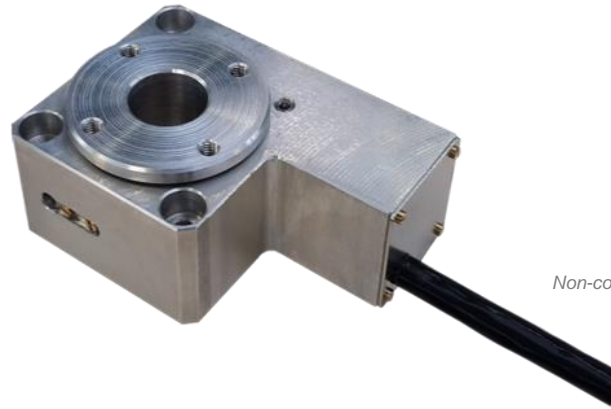


Update : 27/02/2019



Non-contractual photo

HIGH PRECISION REVERSE ROTATION

2 - Applications

Optics, sensors, laser alignment

Applications requiring strength and high mechanical stability.

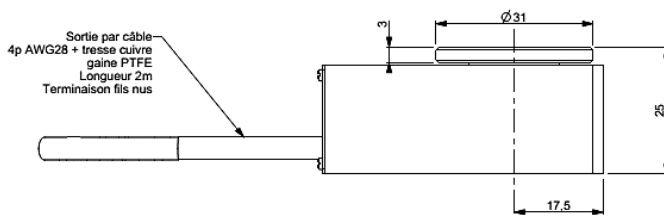
1 - Characteristics

- Small size
- Stepper motor
- Irreversible gearbox such as wheel and worm
- High position stability power off
- Electrical limit and home switches
- Optical incremental encoder for direct acquisition and rotation control.

3 - Technical Specifications

CHARATERISTICS	SPECIFICATION
Stroke	unlimited
Speed	Up to 15 rpm
Resolution	1.57 mrad/step
Hybrid stepper motor	
Irreversible board rotary	
Grease and materials high vacuum compatible	
Aluminum finish	

4 - Dimensions



Spécifications	Valeur
Course	illimitée
Résolution	1.57 mrad/pas
Vitesse	jusqu'à 15 tours/min
Motorisation Pas à Pas hybride	
Rotation du plateau irréversible	
Graisse et matériaux compatibles vide primaire	
Finition Aluminium Brut	

