

TMP 100-1000-100



XY assembly

**Covered stage with manual button for safe use**

## 1 - Application

This standard economical stage is a multi-purpose product with XY, XZ or XYZ configuration. The product is fully covered for safety use. The product is drivable externally with a knurled button.

The markets targeted are industrial and academic research.

## 2 - Description

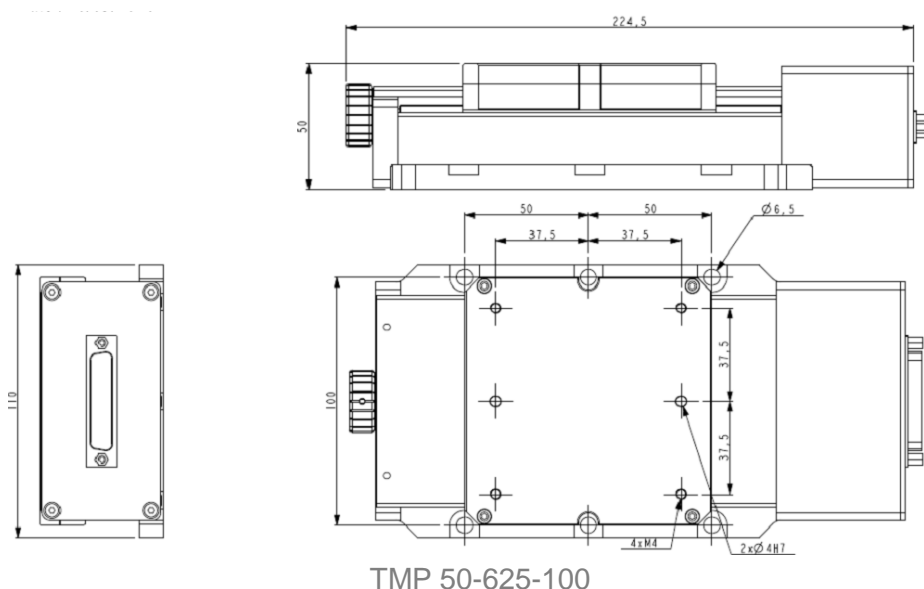
- Recirculating ball bearing rails
- Irreversible precision screw-nut
- Hybrid stepper motor or DC motor
- Backlash compensation
- Optical sensors
- Bare aluminum or stainless steel
- Manual drive

*All our products can be **customized** to match your exact requirements*

### 3 – Technical Data

CHARACTERISTIC	SPECIFICATIONS		
Travel	50 mm	100mm	200mm
Theoretical resolution	625 nm / step	625 nm / step	625 nm / step
Unidirectional repeatability	1 $\mu$ m	1 $\mu$ m	1 $\mu$ m
Max velocity	1,25 mm/s	1,25 mm/s	1,25 mm/s
Horizontal load capacity	10 kg	10 kg	10 kg
Vertical load capacity	4 kg	4 kg	4 kg
Size	225x110x50	275x110x50	360x110x50
Weight	2,5kg	2,8 kg	3,2 kg
Material	Aluminum 5083	Aluminum 5083	Aluminum 5083
Electrical specification	24 to 48 VDC, 0,4A per phase, Sub-D9 connector		
Electronic controller	C1AMPP-1C or C2-AMPP-2C		
Variant and option	<ul style="list-style-type: none"> <li>• Linear encoder</li> <li>• HV, UHV, ISO6 preparation</li> </ul>		

### 3 – Dimension (mm)



*Note: Other information's or drawings on demand*