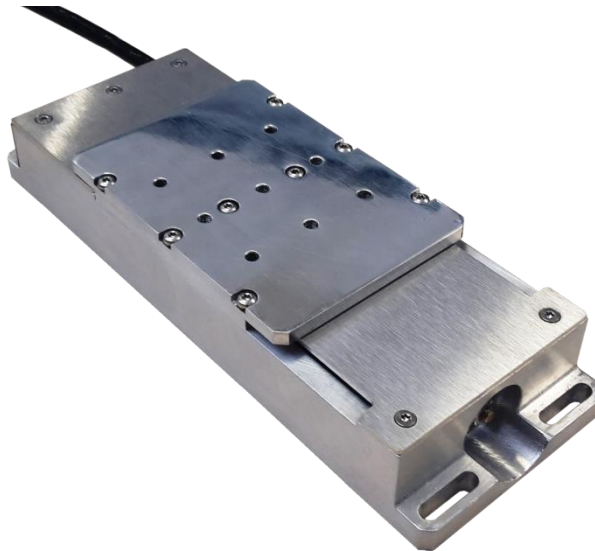


Update : 20/01/2016



Non contractual photo

TMR stages translate with high precision an equipment, a part or a sample.

1 - Design

The robotized micrometric Stage TMR has two precision ball bearings and 4 pads for an increased stiffness. A very accurate position is reached thanks to a screw-nut system with spring backlash adjuster. The stage is driven by a 12V DC gearmotor with embedded incremental encoder.

The entire stage is completely enclosed in order to avoid any particle and grease pollution on the sample coming from the bearings and screw-nut system.

This stage has a mechanical limit switch for homing. The switch is located at the extreme position, cable side.

TMR can be used in each direction XYZ and it can be combined with other stages to get multi-axes movements.

2 - Applications

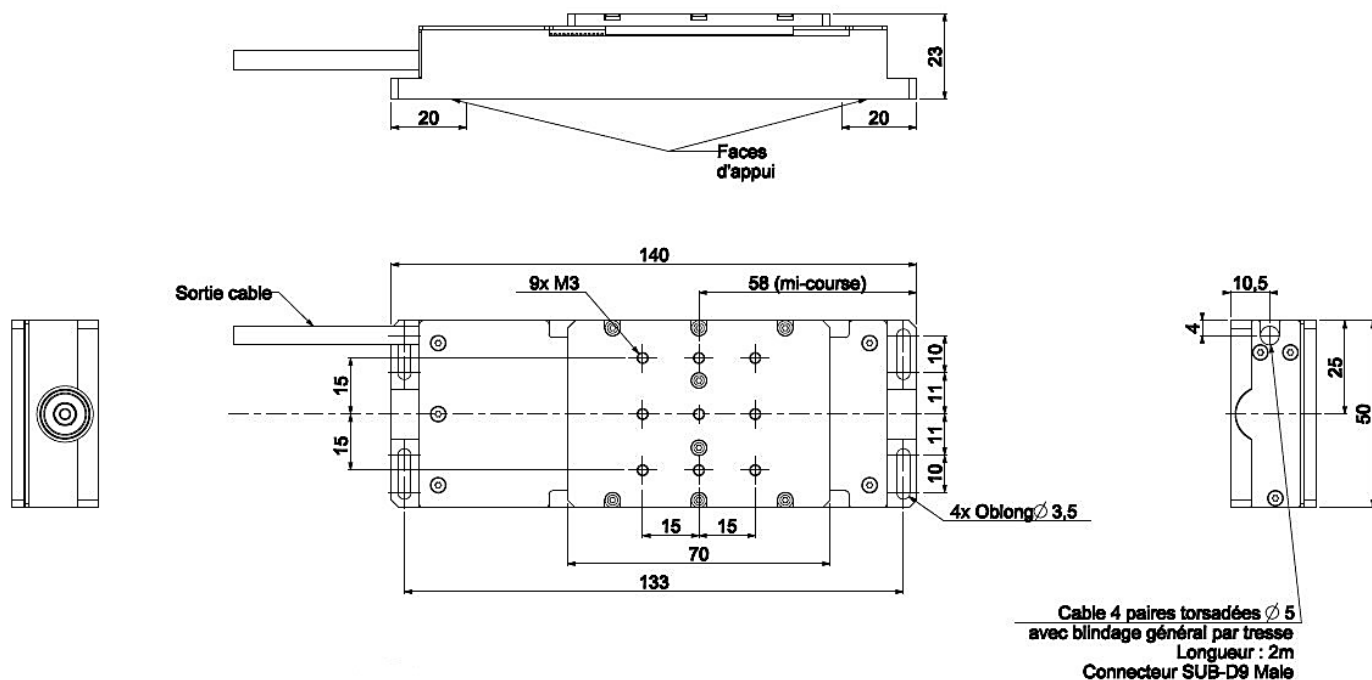
- Accurate positioning of optics, sensors, probes....
- Motorization of stages, mounts...

3 - Technical Data

PARAMETER	VALUES
Maximum Stroke	30 mm
Bidirectional Repetability	< 2 µm
Backlash	< 5 µm
Maximum speed	3 mm/s
Encoder resolution	0,047 µm/pt
No-load current	0,1 A
Rated Current (Thermal limit)	0,2 A
Max Current	0,33 A
Maximum load (vertical mouvement)	40 N
Maximum load (horizontal mouvement)	100 N
Screw/nut dimensions	ISO M5 x 0,8
Preload	Spring
Dimensions (L x H x P)	140 x 23 x 50 mm
Mass	510 g

Options : customized interfaces, connector, UHV, Stroke modification, control electronics...

4 - Dimensions



ISP SYSTEM
Z.I. de la Herray – B.P. 10047
65501 VIC-EN-BIGORRE - France

+33 (0)5 62 33 44 44
+33 (0)5 62 33 44 45

contact@isp-system.fr
www.isp-system.fr

Capital de 1 000 000 € - SIRET : 410 675 078 00027 – APE : 7112B – TVA : FR 19 410 675 078